

PS Series - Clamp-on Torque Transducer

Product Overview

This style of Transducer is designed for Automotive and other applications where battery changing is undesirable and radial shaft movement prevents the use of a 'static' coil around the shaft for a permanently powered data transmission system.

The use of bearings to carry the stator module allows ample radial movement. It is generally used for shaft diameters between 19 and 32mm but larger sizes can be accommodated for with ease. Any supply voltage from 12 to 220V can be used. Various outputs are available for data logging purposes.

System Specifications:

Accuracy:	$\pm 0.5\%$ (Bidirectional)	Non-linearity:	$\pm 0.1\%$ FAS
Repeatability:	$\pm 0.1\%$ FS	Hysteresis:	$\pm 0.1\%$ FS
Calibration level:	Specified on cal.cert.	Operating Temp:	0 to $+60^{\circ}\text{C}$
Zero shift:	$< \pm 0.01\%$ FS/ $^{\circ}\text{C}$	Span shift:	$< \pm 0.02\%$ FS/ $^{\circ}\text{C}$
Output zero Torque:	10 kHz	Output +FS Torque:	15 kHz
Output -FS Torque:	5 kHz	Optional Outputs:	$\pm 10\text{V}$, 4-12-20mA

Industrial Measurements

part of Crane Electronics Ltd.

Watling Drive

Sketchley Meadows

Hinckley LE10 3EY

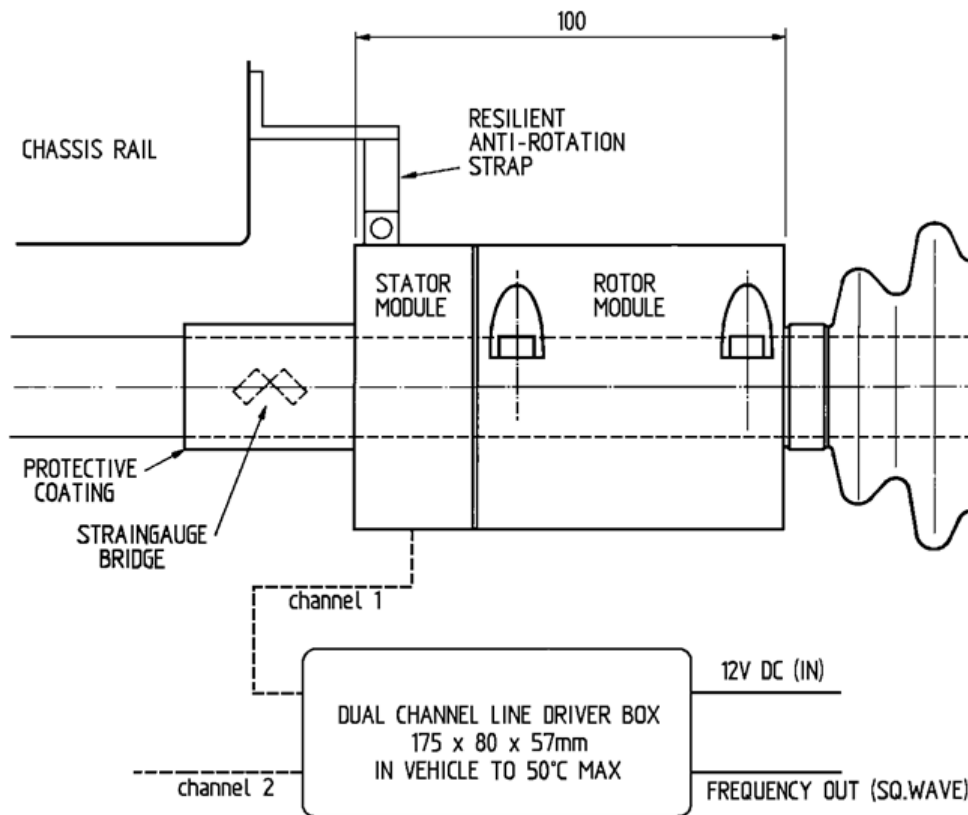
Tel: +44(0) 1332 810 240

sales@indmeas.co.uk

www.indmeas.co.uk



System Schematic



For more information about the PS series or for a quote, call +44 (0) 1332 810 240 or email sales@indmeas.co.uk.

Providing custom torque solutions

Industrial Measurements
part of Crane Electronics Ltd.
Watling Drive
Sketchley Meadows
Hinckley LE10 3EY
Tel: +44(0) 1332 810 240
sales@indmeas.co.uk
www.indmeas.co.uk

